



FMT EQUIPMENT CORPORATION

P.O. Box 6198

HAMDEN, CT 06517

PHONE: (203)787-5973

FAX: (203)401-8604

E-MAIL: SALES.SUPPORT@FMT-EQUIPMENT.COM

WEB SITE: WWW.FMT-EQUIPMENT.COM

November 2016

FMT Equipment Overview

FMT RollTrack® makes your roll grinding operation a winner!

FMT Equipment Corporation has been in business for more than twenty-five years providing roll measuring equipment and services to the paper, steel and aluminum industries, and machine shops serving those industries.

We design our systems combining mechanical, off-the-self electronics, and software features into comprehensive solutions based on customer needs and our expertise. A roll grinding operation is enhanced by the cutting edge measuring capabilities helping roll grinders to grind a roll to tight specs quickly. The computerized system provides measurement reports to mill production as a certificate on the quality of roll grinding. Before grinding measurements often help to troubleshoot machine problems further shortening already quick payback times and saving money in a long term.

The main products of FMT Equipment are:

RollTrack® recording and display systems for roll calipers

RollTrack® servo controls for roll grinders

FMT Equipment offer a complete line of roll measuring hardware from saddle type calipers with a dial indicator to machine mounted models and in process gauging using the WMG hardware. FMT RollTrack® is used with all types of the roll measuring models and the servo controls can be retrofitted to all makes of roll grinders.

FMT Equipment's RollTrack® systems have been installed and are operating in the USA, Canada, China, Indonesia, Thailand, Malaysia, Brazil, New Zealand and India, and include corporations such as:





RollTrack® Installation Locations



North America



RollTrack® Export Installations



PUBLICATIONS AND PRESENTATIONS BY E. JUHANI JASKE

President of FMT Equipment Corporation

- 87 Presentation of paper "Roll Measurements and Tolerances" at the Maintenance Conference of Canadian Pulp and Paper Association. St. John, New Brunswick, Canada.
- 89 Publication of paper "Roll Measurements and Tolerances" in the February issue of Pulp and Paper Canada, a Southam Business publication.
- 93 Presentation of paper "Roll Measurements and Tolerances" at the PAPEX international paper industry conference in Maastricht, the Netherlands 11/3/1993.
- 05 paperASIA trade magazine
April 2005
Roll Grinding - One Key to Proper Roll Maintenance
Authors: E. Juhani Jaske and Dominic D'Amato
- 05 paperASIA trade magazine
June 2005
Roll Management Software
Authors: Darla Bryant, Robert Ragsdale and Juhani Jaske
- 07 ABTCP-ZELLCHEMING 2007 40th Pulp and Paper International Congress
October 18, 2007, São Paulo, Brazil
Authors: E. Juhani Jaske and Dominic D'Amato

FMT RollTrack® Products

RollTrack® recording and display systems

FMT Equipment's own proprietary product RollTrack® is a computer-based recording system used with roll calipers. RollTrack® is a user-friendly software application made specifically for roll measuring and grinding. Rolls are ground in several industries: paper, steel, aluminum, and machine shops. The RollTrack® program is easy to use and displays the measured results in both graphic and numeric forms. The results are stored on a hard disk or server, and the elaborate graphic and numeric reports can be viewed on a screen and printed out.



Portable, Saddle Type Roll Calipers

RollTrack® system can be easily configured for use with different kinds of roll calipers without change in hardware other than the number of sensors used as input devices to the program from the caliper mechanics. One of our latest products from our development effort is a portable, Ultrabook computer-based recording system.



Machine Mounted Roll Calipers

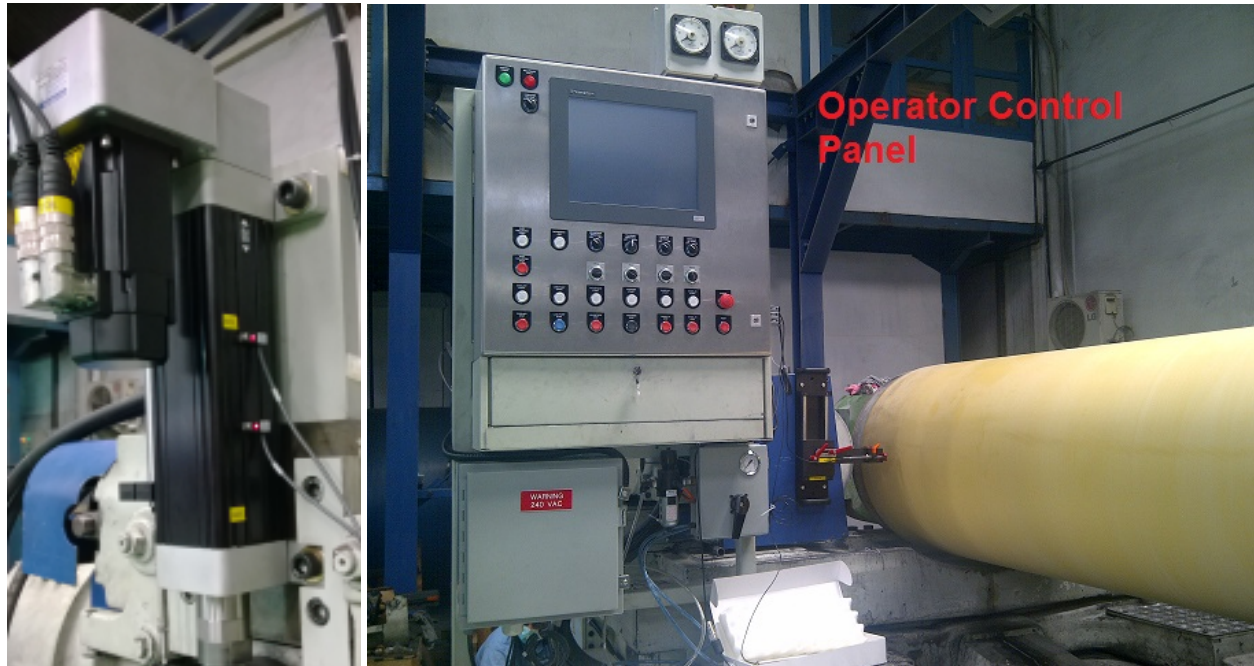
FMT Equipment makes and sells machine mounted roll calipers for two-wheel and single wheel roll grinders. The accuracy of the roll calipers is better than .0001" (0,0025mm) when measuring finish ground, calender rolls. Machine mounted roll calipers make more automated roll measurement operations possible. Elaborate FMT RollTrack® recording systems can be used with all WMG roll caliper models. The computers and electronics are off-the-self components without any "black boxes."



A machine mounted model is custom designed for a roll grinder.
Above: A design for a single wheel roll grinder.
Below: A design for a two-wheel roll grinder.

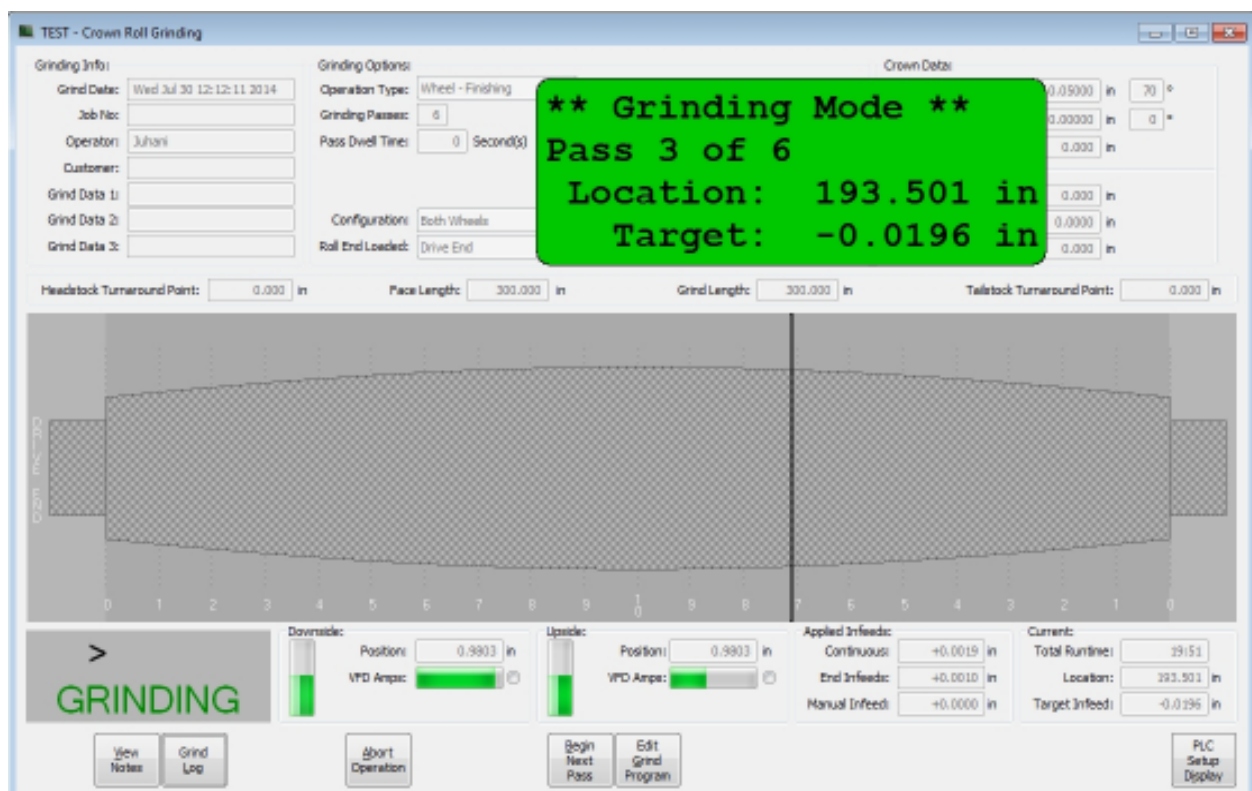


FMT RollTrack® Servo Controls

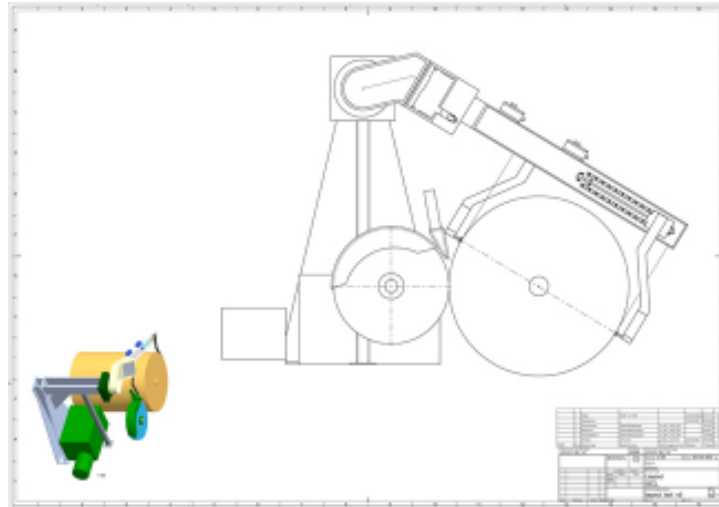


Pictures: RollTrack® servo control system installed on the Farrel two-wheel roll grinder.

The RollTrack® servo system controls the tilt infeed of a wheelhead to grind a roll with straight or crown shape, and compensates the path of a grinding wheel during the consequent grinding passes from a roll measurement.



Newest Development



Pictures: In process gauging: roll measurements are taken when grinding and FMT RollTrack® sends the results to the CNC control for error compensation. The caliper hardware was designed and manufactured by WMG. Eddy current fault detection system is mounted on the same arm assembly. Abbott Machine rebuilt the above roll grinder.